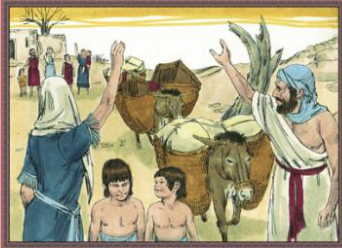
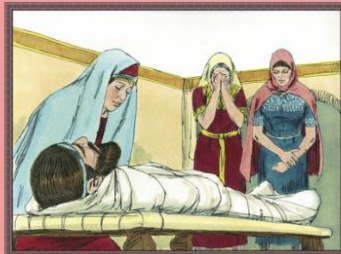


RUTH

In the days when the judges ruled, there was a famine in the land, and a man from Bethlehem in Judah, together with his wife and two sons, went to live for a while in the country of Moab. The man's name was Elimelech, his wife's name was Naomi, and the name of his two sons were Mahlon and Kilion.



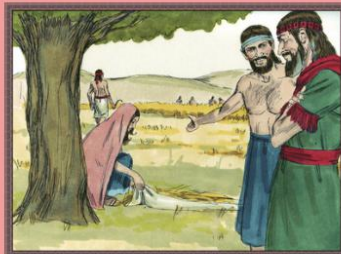
Now Elimelech died and Naomi was left with her two sons. They married Moabite women, one named Orpah and the other Ruth. After they had lived there about ten years, both Mahlon and Kilion also died.



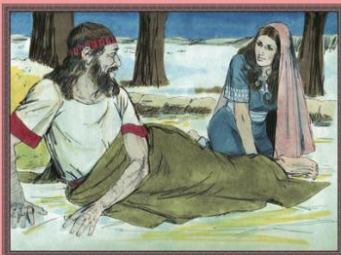
When Naomi heard the famine was over she planned to return home. At Naomi's urging Orpah remained but Ruth said to Naomi, "Where you go I will go, and where you stay I will stay and your God will be my God."



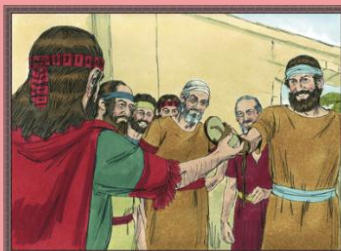
Ruth gleaned in the field of a man named Boaz. He said to Ruth, "Don't go and glean in another field and don't go away from her. Stay here with my servant girls."



Naomi said to Ruth, "Is not Boaz a kinsman of ours? When he lies down, note the place where he is lying. Then go and uncover his feet and lie down. He will tell you what to do."



The kinsman-redeemer refused to redeem Naomi and Ruth. He said to Boaz, "Buy it yourself." and he removed his sandal. Boaz announced, "Today I have bought from Naomi all the property of Elimelech. I have also acquired Ruth as my wife.



Ruth gave birth to a son and the women said to Naomi, "Praise be to the Lord, who has given you a kinsman-redeemer

Word Search

(Find the underlined words from the story)

T	I	Z	K	D	A	R	A	H	S
S	R	T	V	G	A	X	C	L	E
O	M	O	R	E	D	E	E	M	L
S	I	W	O	C	L	Q	C	D	Y
C	L	X	Z	E	W	C	T	K	S
C	F	Y	M	L	D	P	L	G	Q
G	H	I	F	X	A	X	Y	Q	R
L	L	E	Y	L	Y	M	L	H	Y
E	T	V	Z	L	W	P	Z	G	J
A	F	C	Q	C	A	S	R	X	S
N	V	U	S	E	G	D	I	L	N
E	B	S	H	T	U	R	N	A	A
D	O	N	A	F	P	K	O	A	C
P	F	N	N	Q	P	M	W	P	S
S	U	O	O	R	I	M	F	E	H
D	P	U	L	P	S	Z	E	U	G
Z	N	O	H	D	B	S	E	K	I
F	A	K	A	F	E	B	T	T	U
S	Z	N	M	Q	O	J	Q	R	Z
Y	A	G	I	A	E	H	Z	P	O
L	K	F	Z	P	Q	N	A	R	V
O	P	X	S	A	C	O	F	S	P
R	H	N	L	N	G	I	X	K	H
Q	H	Y	P	A	E	L	P	Q	A
Y	R	M	C	M	I	I	A	J	P
X	H	Z	V	S	T	K	E	G	R
Q	T	C	X	N	D	Z	A	E	O
H	W	O	R	I	F	R	R	U	N
Z	L	C	V	K	C	B	U	N	F
V	E	L	N	T	B	I	I	G	E